



GLOBAL. MAGNETIC. FORCE.™

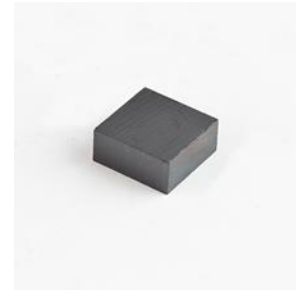
Technical Data Sheet

Ceramic Rectangle Magnets

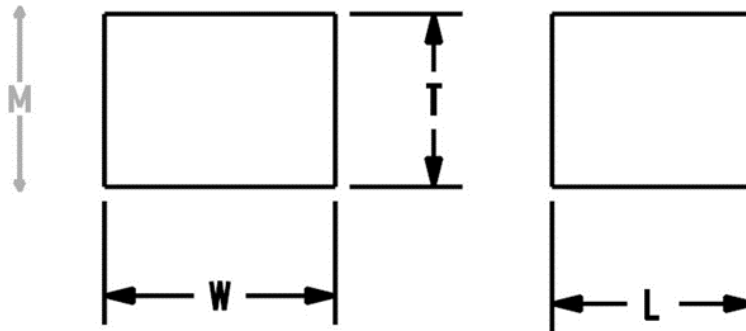
Ceramic 8 is an excellent choice wherever magnet length is at a minimum or where the magnetic circuit is subject to severe demagnetizing fields. Some typical uses include holding magnets, motors, reed switches, and Hall-Effect devices. Common applications include; speaker magnets, DC brushless motors, outboard motors, DC permanent motors, lifting, holding, retrieving, and separating.

Product Specifications

Shape:	Block
Tolerance:	.005
Material:	SrFe
Plating:	None
Max. Operating Temperature:	480°
Br. Max:	3850
BH Max:	8



Part No.	T	W	L	Holding Force (lbs)	Price
MA1100	1.000	1.000	2.000	10.3	\$3.77



- All Measurements are in inches (unless otherwise noted)
- Direction of Magnetization (DOM) is through the thickness unless noted
- Unless otherwise specified, magnets will be furnished in magnetized condition
- Holding forces are approximate. These are average values obtained under laboratory conditions. Size, shape, and material of the test piece may affect actual pull forces

