



GLOBAL. MAGNETIC. FORCE.™

Technical Data Sheet

Ceramic Holding Magnets, BT Series

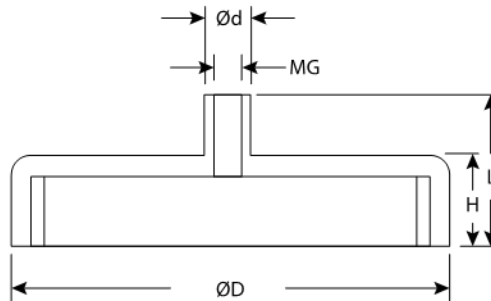
The BT Series magnets are ceramic and zinc-plated. BT series magnets can be used with our available [hooks](#). BT Series magnets can be special ordered in various colors. These utility-grade assemblies are perfect for a wide variety of mass market applications.

Product Specifications

Shape:	Round
Tolerance:	.005
Material:	SrFe
Plating:	Zn
Max. Operating Temperature:	180°
Br. Max:	3850
BH Max:	5



Part No.	D	d	L	H	Tap Size (MG)	Holding Force	Price
BT32	1.26	.31	.59	.28	M4	18.0	\$2.58



- All Measurements are in inches (unless otherwise noted)
- Direction of Magnetization (DOM) is through the thickness unless noted
- Unless otherwise specified, magnets will be furnished in magnetized condition
- Holding forces are approximate. These are average values obtained under laboratory conditions. Size, shape, and material of the test piece may affect actual pull forces

