



GLOBAL. MAGNETIC. FORCE.™

## Technical Data Sheet

### Ceramic Holding Magnets, BT Series

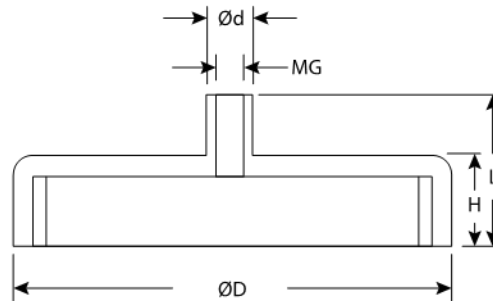
The BT Series magnets are ceramic and zinc-plated. BT series magnets can be used with our available [hooks](#). BT Series magnets can be special ordered in various colors. These utility-grade assemblies are perfect for a wide variety of mass market applications.

#### Product Specifications

<b>Shape:</b>	Round
<b>Tolerance:</b>	.005
<b>Material:</b>	SrFe
<b>Plating:</b>	Zn
<b>Max. Operating Temperature:</b>	180°
<b>Br. Max:</b>	3850
<b>BH Max:</b>	5



Part No.	D	d	L	H	Tap Size (MG)	Holding Force	Price
BT16	.63	.24	.45	.18	M3	4.0	\$1.72



- All Measurements are in inches (unless otherwise noted)
- Direction of Magnetization (DOM) is through the thickness unless noted
- Unless otherwise specified, magnets will be furnished in magnetized condition
- Holding forces are approximate. These are average values obtained under laboratory conditions. Size, shape, and material of the test piece may affect actual pull forces

